

Colour Hardener

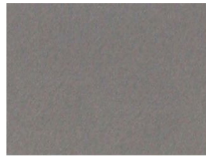
Permacolour Colour Hardener is hand broadcast over freshly poured concrete and worked into the surface using a bullfloat for the first application and trowel after the second coat is applied. When properly applied and troweled into the surface it forms a coloured concrete surface that is resistant to weathering, wear and normal abrasion.



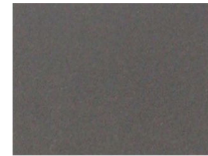
BLUE GUM



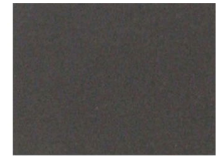
MISTY GREY



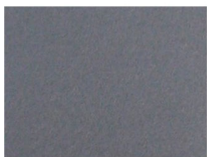
GRANITE GREY



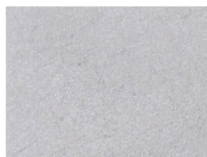
CHARCOAL



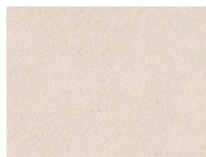
BLACK



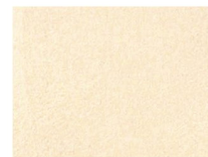
SLATE BLUE



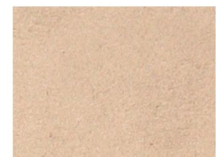
SMOKEY BLUE



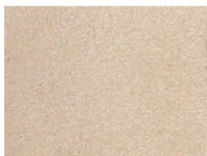
BONE



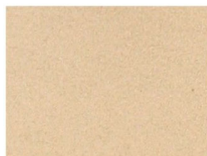
CREAM



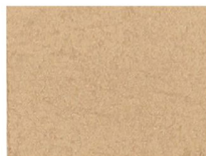
PUMICE



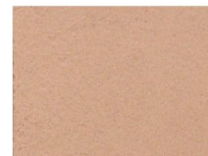
BEIGE



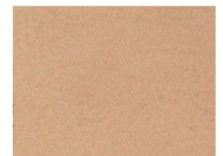
BUCKWHEAT



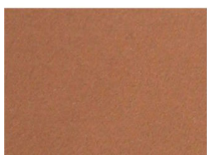
VINTAGE BUFF



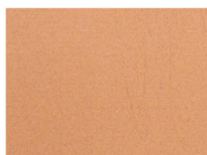
FAWN



SANDSTONE



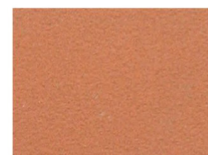
DESERT TAN



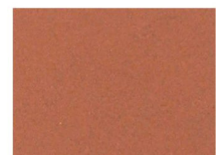
MANGO



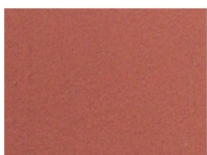
PAPAYA



PEACH



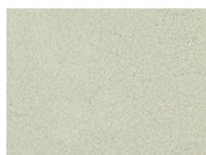
TERRACOTTA



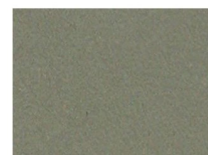
CORAL



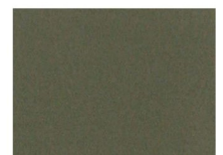
BRICK RED



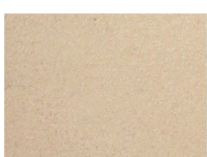
MINT GREEN



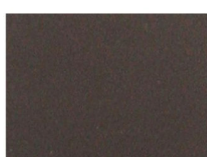
AUTUM GREEN



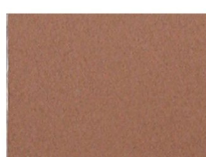
BOTTLE GREEN



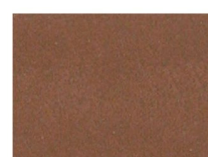
PAVLOVA



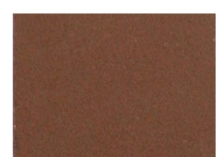
VOODOO



NUTMEG



COFFEE



TAN

Due to the batching process, colours may vary from actual colour